

Office For LEASE

1,200± sf

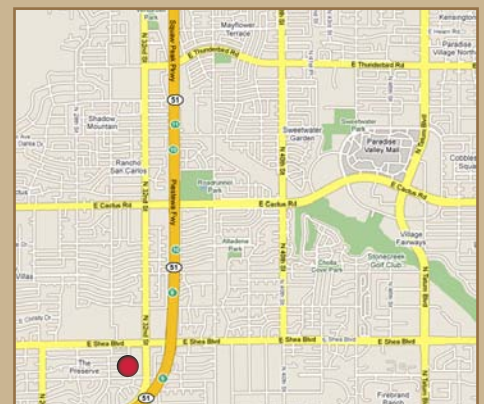
10221 N. 32nd Street - Suite A



Ideal Medical or Administrative Office Space. Conveniently located at 32nd Street & Shea. Zoned C-O City of Phoenix.

SPACE AVAILABLE

- Tiled reception, 4 offices, open/flex space, storage closet with shelving, restroom with shower
- Ceiling fans, freshly painted!



All information regarding property is from sources is deemed reliable, but no warranty is made to its accuracy, and no liability is to be imposed on the broker. The same is submitted to errors, omissions, change of price, rental or other conditions, prior to transaction.



16410 north 91st street
suite 112
scottsdale, arizona 85260

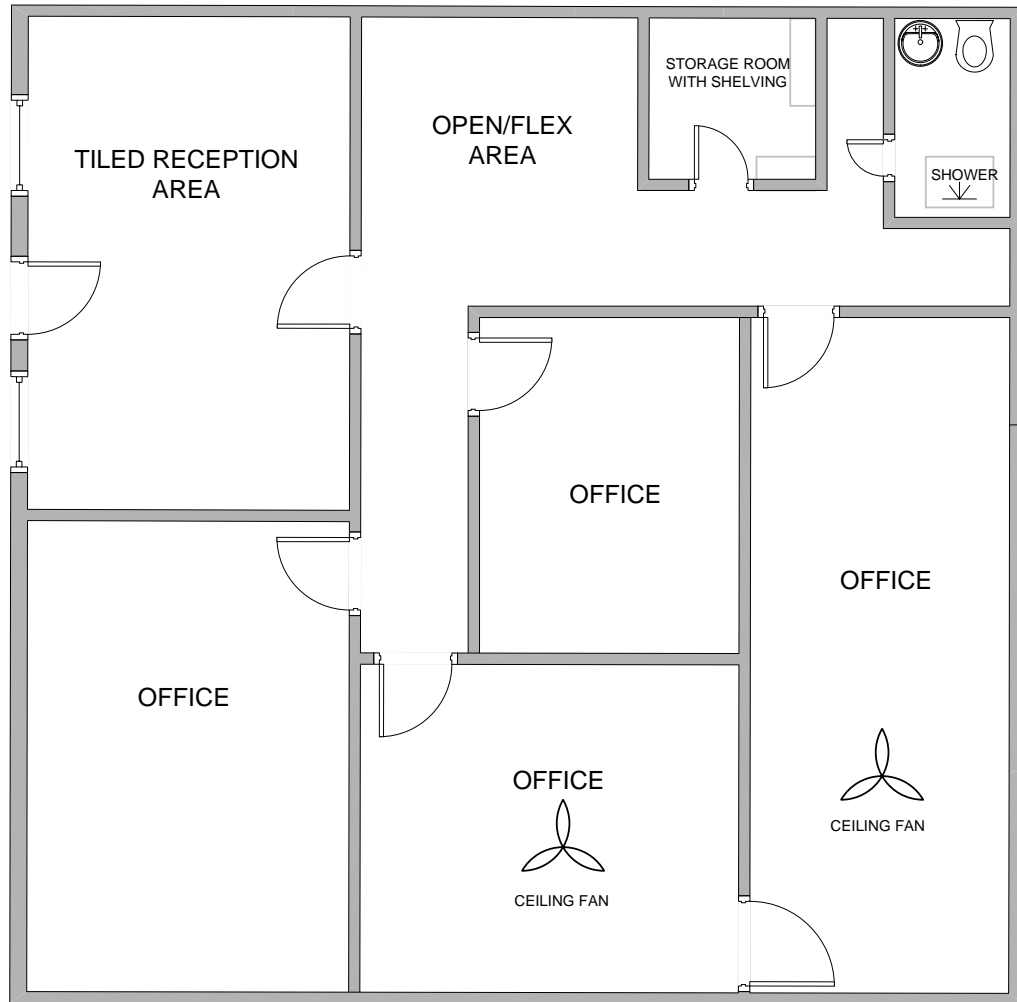
480.443.3992
shellcommercial.com

Randy Shell, Designated Broker
Randy@shellcommercial.com

John Quatrini, Associate Broker
JQ@shellcommercial.com

Michelle Gardner, Sales Associate
michelle@shellcommercial.com

10221 N 32nd Street
Suite A
± 1,200sf



NOT TO SCALE

All information furnished regarding property for sale, rental or financing is from sources deemed reliable, but no warranty or representation is made to the accuracy thereof and same is submitted to errors, omissions, change of price, rental or other conditions, prior to sale, lease or financing or withdrawal without notice. No liability of any kind is to be imposed on the broker herein. This information has been secured from sources deemed reliable, however, we make no warranties as to its accuracy.