

# Office For LEASE

# 1,000± sf

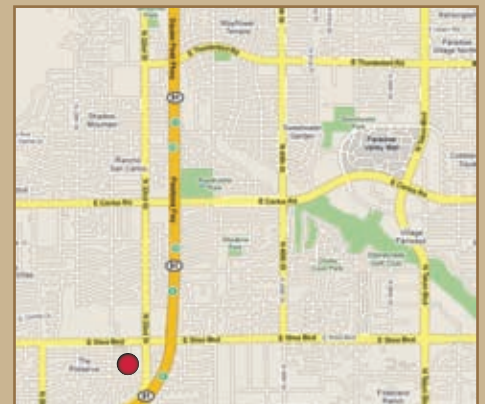
## 10221 N. 32nd Street - Suite G



**Ideal Medical or Administrative Office Space. Conveniently located at 32nd Street & Shea. Zoned C-O City of Phoenix.**

### SPACE AVAILABLE

- Reception, 2 offices, conference room or large office, server/file room, restroom
- Newer, neutral carpet!



All information regarding property is from sources is deemed reliable, but no warranty is made to its accuracy, and no liability is to be imposed on the broker. The same is submitted to errors, omissions, change of price, rental or other conditions, prior to transaction.



16410 north 91st street  
suite 112  
scottsdale, arizona 85260

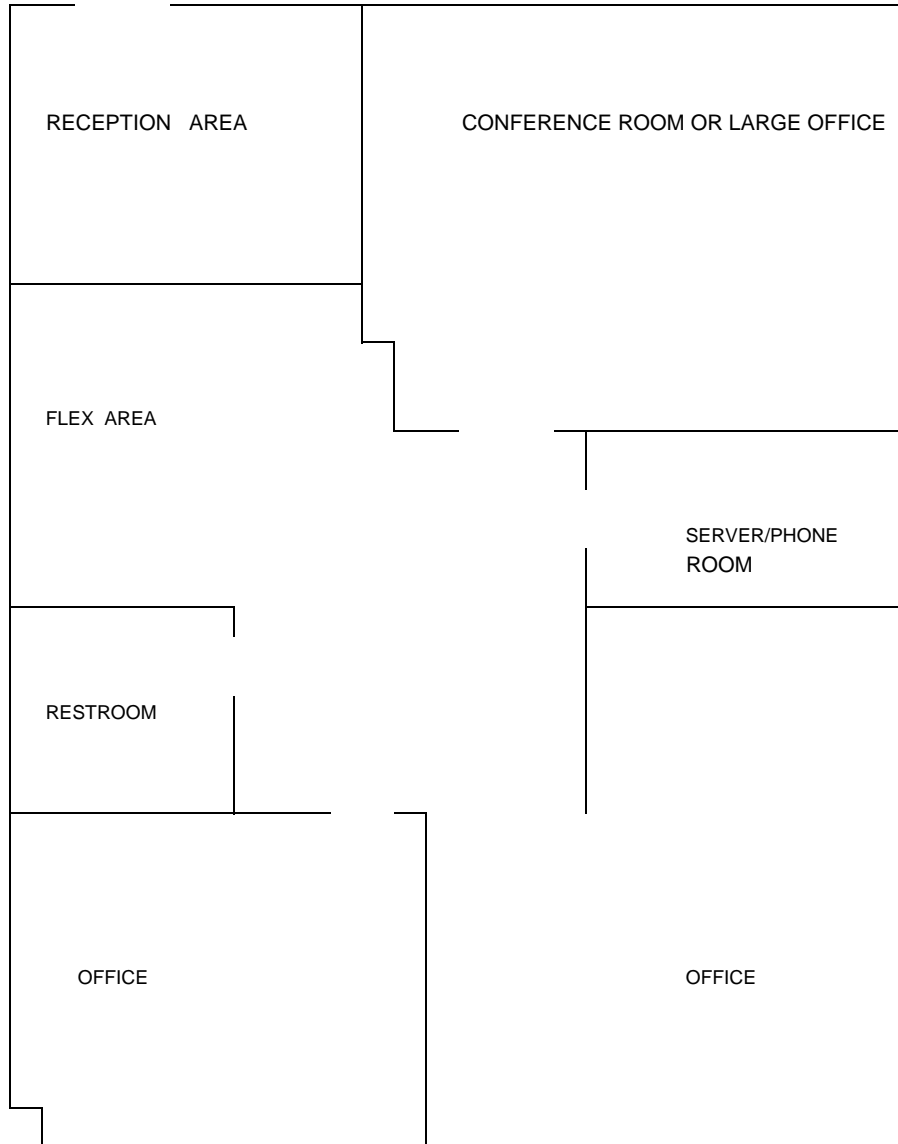
480.443.3992  
shellcommercial.com

Randy Shell, Designated Broker  
Randy@shellcommercial.com

John Quatrini, Associate Broker  
JQ@shellcommercial.com

Michelle Gardner, Sales Associate  
michelle@shellcommercial.com

10221 N. 32nd Street  
Suite(s) G @ +/-1,000 sq. ft.



**NOT TO SCALE**

All information furnished regarding property for sale, rental or financing is from sources deemed reliable, but no warranty or representation is made to the accuracy thereof and same is submitted to errors, omissions, change of price, rental or other conditions, prior to sale, lease or financing or withdrawal without notice. No liability of any kind is to be imposed on the broker herein. This information has been secured from sources deemed reliable, however, we make no warranties as to its accuracy.