

Office/Warehouse For **SALE**

2,994± sf

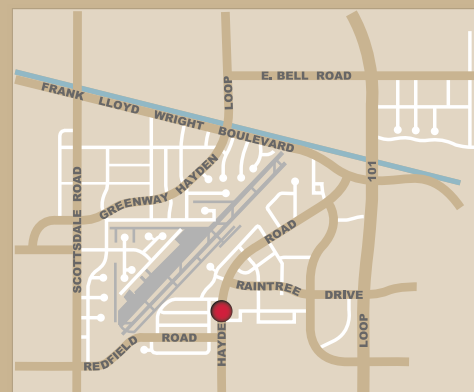
**14201 N. Hayden Rd. Suite C4**

**PRICE REDUCED!**  
**\$120/sf**



**Convenient location off Hayden Road, with close proximity to Loop 101. Zoned I-1, City of Scottsdale**

- Reception, 2 offices, 2 restrooms
- Warehouse



All information regarding property is from sources is deemed reliable, but no warranty is made to its accuracy, and no liability is to be imposed on the broker. The same is submitted to errors, omissions, change of price, rental or other conditions, prior to transaction.

09/09



**SHELL**  
*Commercial Investment Real Estate*

16410 north 91st street  
suite 112  
scottsdale, arizona 85260

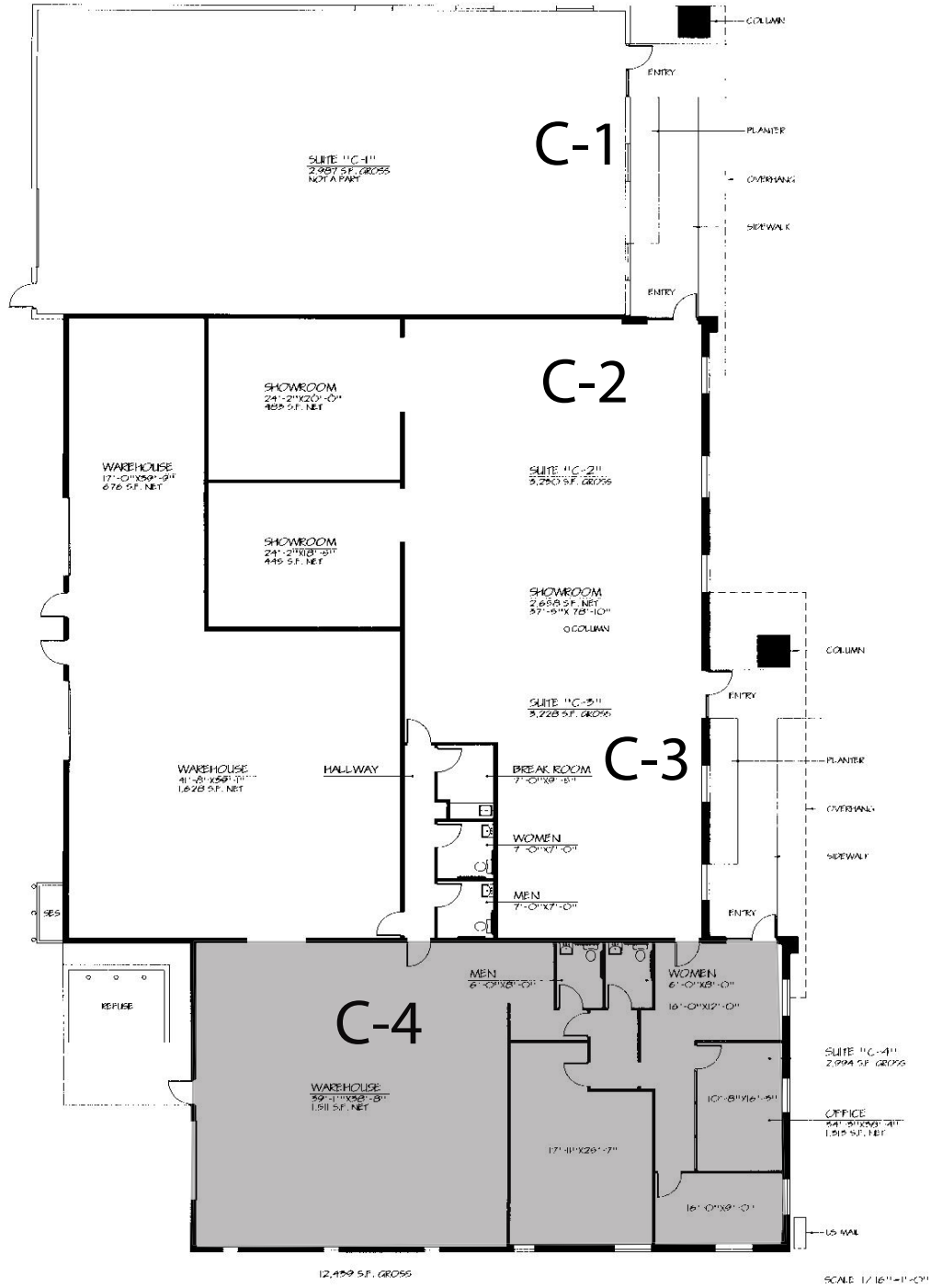
**480.443.3992**  
**shellcommercial.com**

Randy Shell, Designated Broker  
Randy@shellcommercial.com

John Quatrini, Associate Broker  
JQ@shellcommercial.com

Michelle Gardner, Sales Associate  
michelle@shellcommercial.com

14201 N Hayden Road  
 Suite C-4  
 +/-2,994 sf



**NOT TO SCALE**

All information furnished regarding property for sale, rental or financing is from sources deemed reliable, but no warranty or representation is made to the accuracy thereof and same is submitted to errors, omissions, change of price, rental or other conditions, prior to sale, lease or financing or withdrawal without notice. No liability of any kind is to be imposed on the broker herein. This information has been secured from sources deemed reliable, however, we make no warranties as to its accuracy.