

Scottsdale Airpark

RETAIL SHOWROOM FOR LEASE

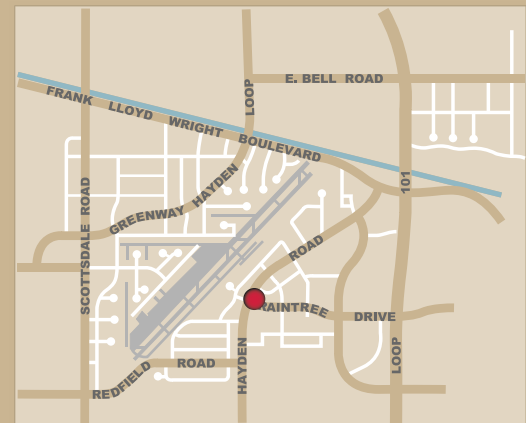
15001 N Hayden Road • Suite 108



NEWLY REMODELED! Exceptionally located on the NEC of Hayden & Raintree Drive! C3 Zoned, City of Scottsdale!

FEATURES

- Lower level: \pm 2,472 sf
- Upper level: \pm 790 sf
- Evap & HVAC
- Located in high-flowing traffic area!



All information regarding property is from sources is deemed reliable, but no warranty is made to its accuracy, and no liability is to be imposed on the broker. The same is submitted to errors, omissions, change of price, rental or other conditions, prior to transaction.



16410 north 91st street
suite 112
scottsdale, arizona 85260

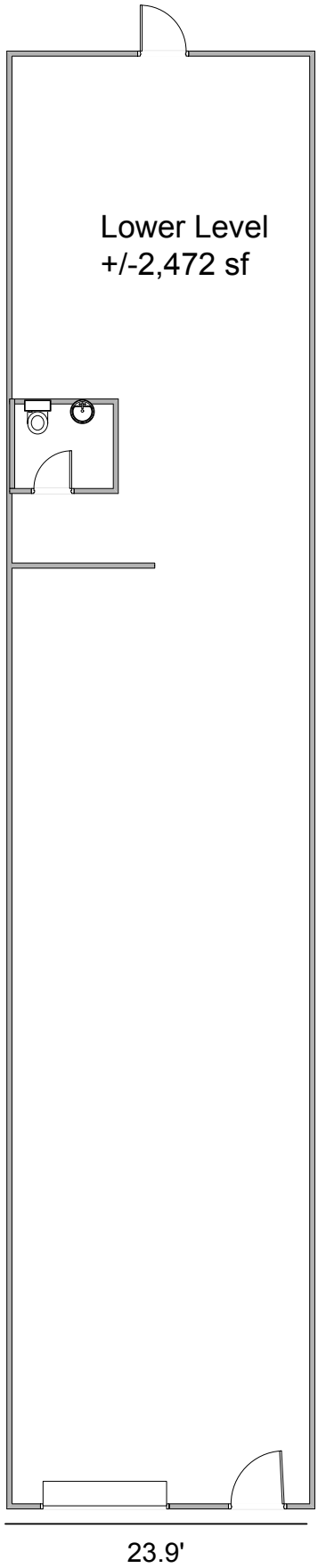
480.443.3992
shellcommercial.com

Randy Shell, Designated Broker
Randy@shellcommercial.com

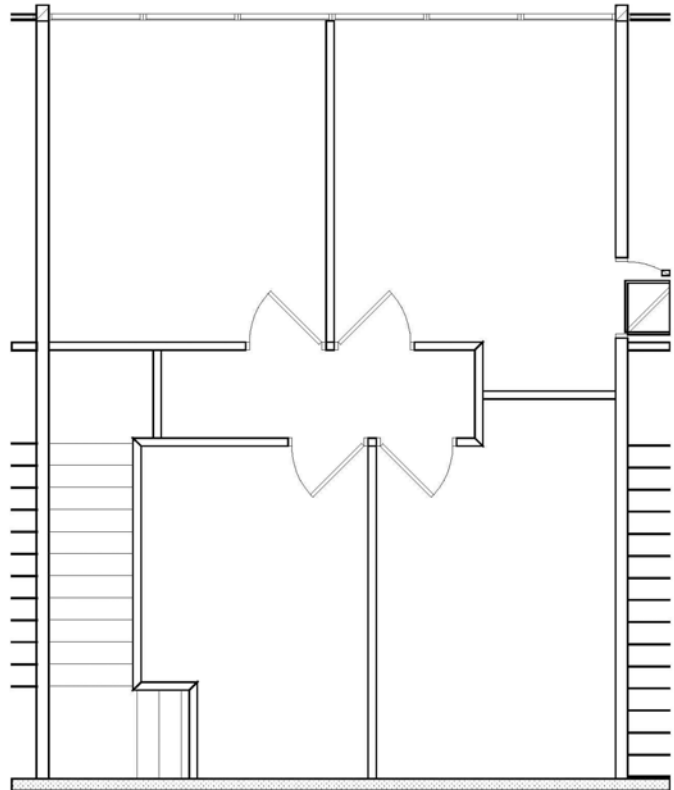
John Quatrini, Associate Broker
JQ@shellcommercial.com

Michelle Gardner, Sales Associate
michelle@shellcommercial.com

15001 N Hayden Drive
Suite 108
+/- 3,262 sf



Upper Level
+/- 790 sf



NOT TO SCALE

All information furnished regarding property for sale, rental or financing is from sources deemed reliable, but no warranty or representation is made to the accuracy thereof and same is submitted to errors, omissions, change of price, rental or other conditions, prior to sale, lease or financing or withdrawal without notice. No liability of any kind is to be imposed on the broker herein. This information has been secured from sources deemed reliable, however, we make no warranties as to its accuracy.