

Freestanding Building for LEASE or SALE

±6,975 sf

15190 N. Hayden Road, Scottsdale

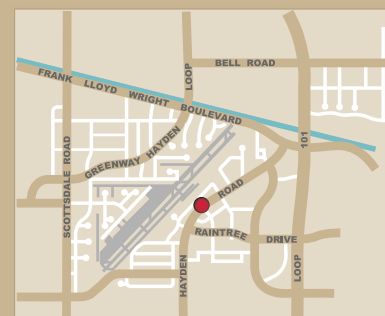
\$2,025,000
FOR PURCHASE

\$19.50/sf NNN
FOR LEASE

Triple A Scottsdale Airpark Location! Former bank with 975±sf drive-thru. Zoned I-1, Light Industrial, City of Scottsdale

FEATURES:

- Built in 1987
- Sprinklered
- Raised floor in portion of building (60-70%)
- Corner location at lighted intersection
- Two lane drive-thru provides pneumatic equipment
- 1 ATM machine, existing cash safe & night drop safe
- 2 Restrooms
- 31 Parking spaces, includes 2 handicapped spaces



Corner of Hayden Road
and 83rd Way
(across from Costco)

All information regarding property is from sources is deemed reliable, but no warranty is made to its accuracy, and no liability is to be imposed on the broker. The same is submitted to errors, omissions, change of price, rental or other conditions, prior to transaction.



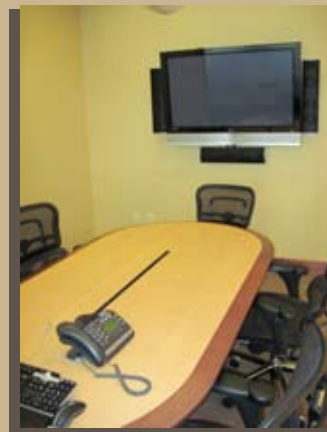
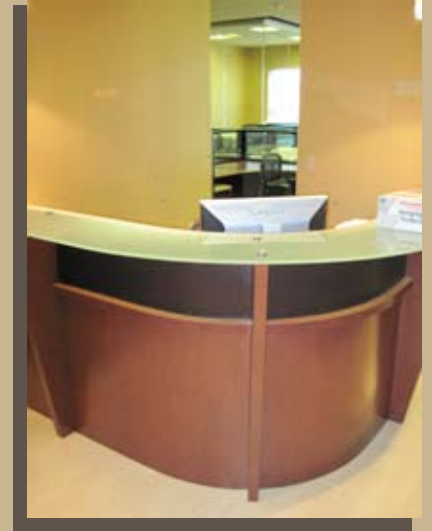
16410 north 91st street
suite 112
scottsdale, arizona 85260

480.443.3992
shellcommercial.com

Randy Shell, Designated Broker
Randy@shellcommercial.com

Spacious & Functional Office Space

15190 N Hayden Road, Scottsdale



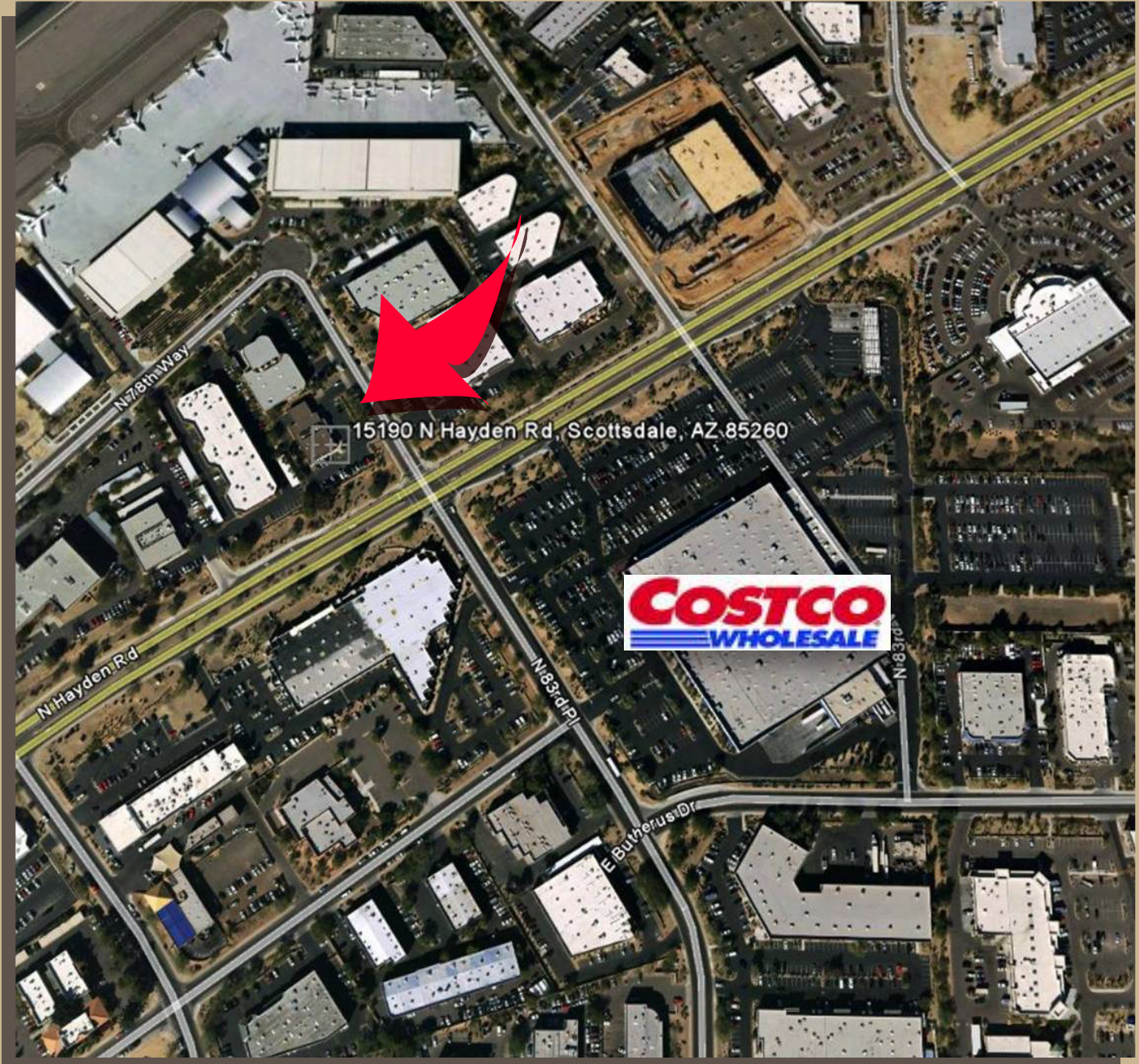
Randy Shell, Designated Broker
Randy@shellcommercial.com

16410 north 91st street
suite 112
scottsdale, arizona 85260

480.443.3992
shellcommercial.com

Prime North Scottsdale Location

15190 N Hayden Road, Scottsdale



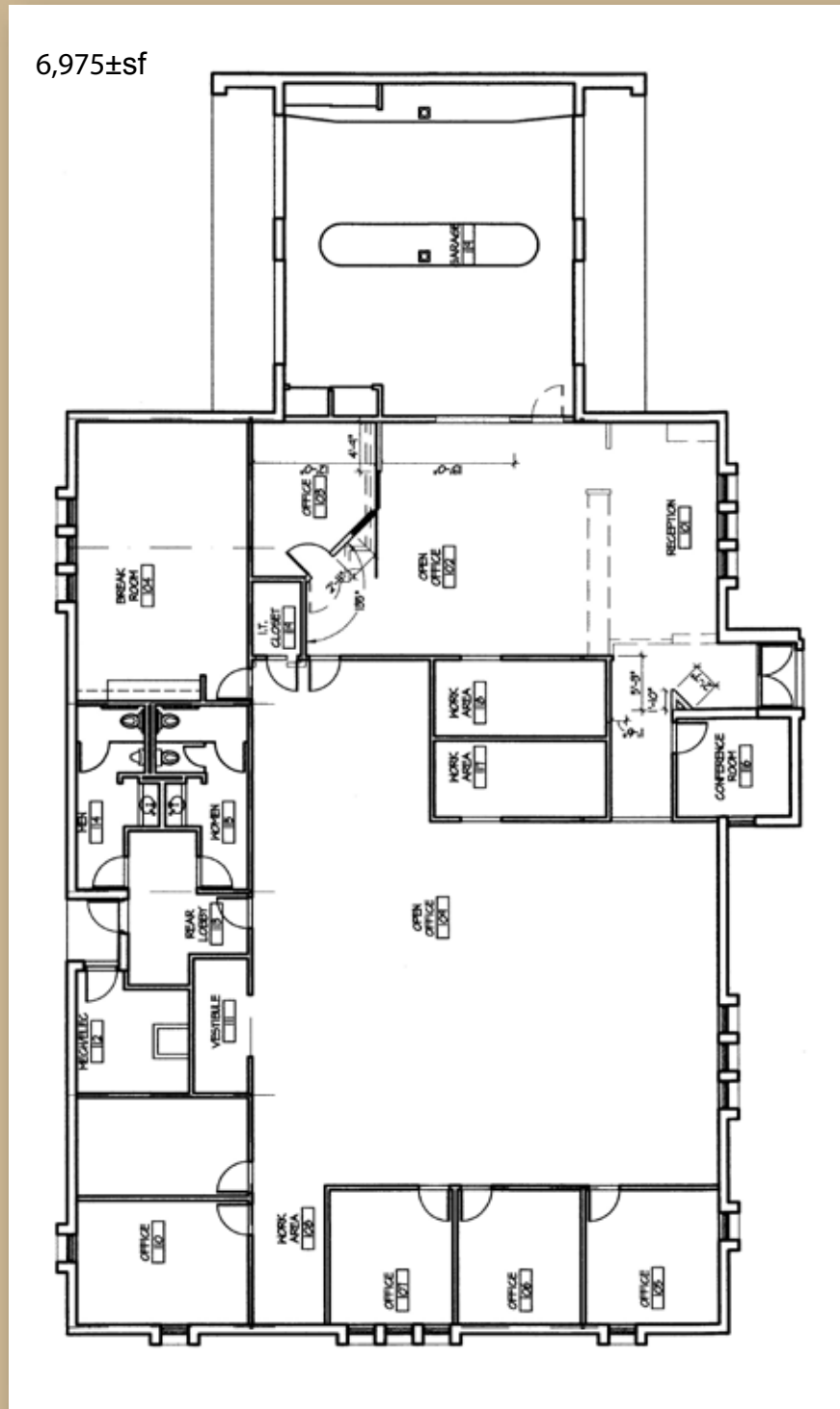
16410 north 91st street
suite 112
scottsdale, arizona 85260

480.443.3992
shellcommercial.com

Randy Shell, Designated Broker
Randy@shellcommercial.com

FLOOR PLAN

15190 N Hayden Road, Scottsdale



16410 north 91st street
suite 112
scottsdale, arizona 85260

480.443.3992
shellcommercial.com

Randy Shell, Designated Broker
Randy@shellcommercial.com