

Showroom/Office/Warehouse For **LEASE** **3,929 ± sf**

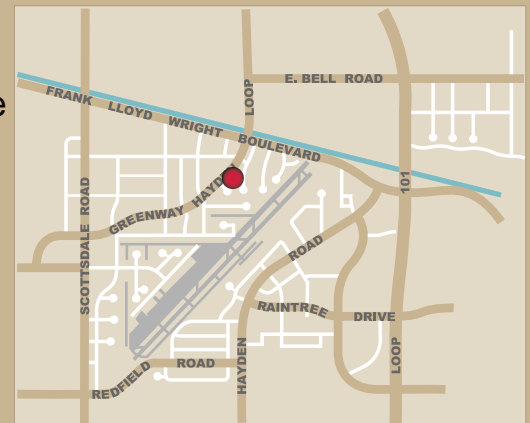
**16001 N. Greenway-Hayden Loop - Suite A**



Located in the heart of the Scottsdale Airpark. This is 850 SF showroom with 2,190 SF Office and a 890 SF warehouse.

## SPACE AVAILABLE

- Showroom, 6 offices, open flex area, breakroom, warehouse
- 16-18' clear height and 100% AC warehouse
- 277/480 phase 3 power
- 12' X 12' Electric Roll Door
- Common Truckwell
- Partial mezzanine for storage not included in SF
- Generous natural lighting
- 3 covered and 5 uncovered parking spaces



All information regarding property is from sources is deemed reliable, but no warranty is made to its accuracy, and no liability is to be imposed on the broker. The same is submitted to errors, omissions, change of price, rental or other conditions, prior to transaction.



16410 north 91st street  
suite 112  
scottsdale, arizona 85260

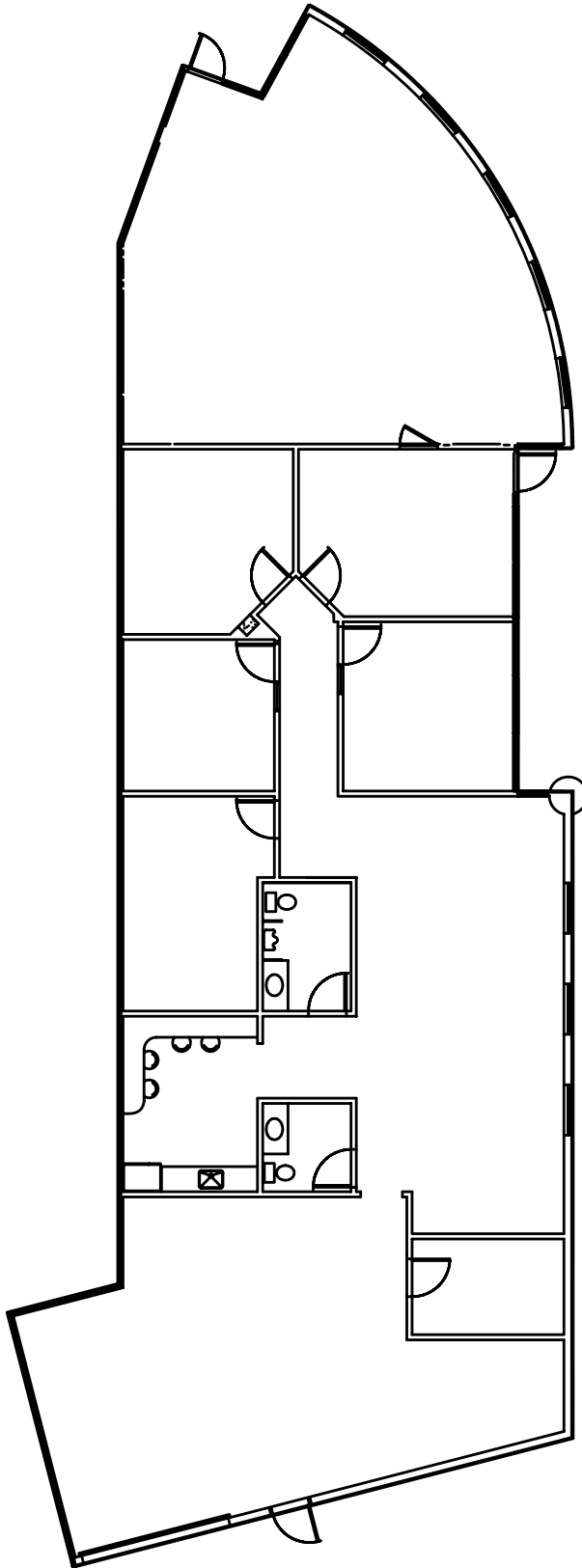
480.443.3992  
shellcommercial.com

Randy Shell, Designated Broker  
Randy@shellcommercial.com

John Quatrini, Associate Broker  
JQ@shellcommercial.com

Michelle Gardner, Sales Associate  
michelle@shellcommercial.com

**16001 N. Greenway-Hayden Loop**  
**Suite A**  
**± 3,039 SF Office • ± 890 SF Warehouse**



**NOT TO SCALE**

All information furnished regarding property for sale, rental or financing is from sources deemed reliable, but no warranty or representation is made to the accuracy thereof and same is submitted to errors, omissions, change of price, rental or other conditions, prior to sale, lease or financing or withdrawal without notice. No liability of any kind is to be imposed on the broker herein. This information has been secured from sources deemed reliable, however, we make no warranties as to its accuracy.