

Office/Showroom/Warehouse For **LEASE** 3,351± sf

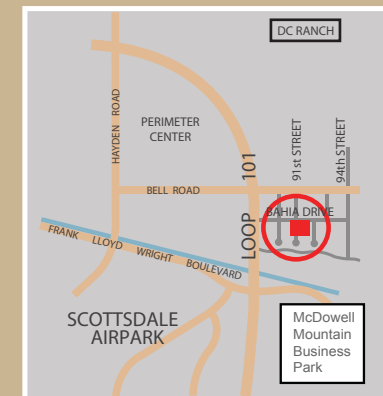
16441 N 91st Street, Suite 102 • McDowell Mountain Business Park



*Located in prestigious
McDowell Mountain Business Park*

FEATURES

- Showroom with beautiful tile flooring
- 864± sf mezzanine office
- Evaporative-cooled warehouse with grade level door
- 18' ceiling clear height
- Architecturally appealing detail!
- Seconds from Loop 101 Freeway



For further information or to request a showing, please contact John or Suzanne!



John Quatrini
Associate Broker

Mobile
602.859.0506

jq@shellcommercial.com



Suzanne Enright
Sales/Leasing Agent

Mobile
602.471.2981

suzanne@shellcommercial.com

 **SHELL**
Commercial Investment Real Estate
shellcommercial.com
480.443.3992

All information regarding property is from sources deemed reliable, but no warranty is made to its accuracy, and no liability is to be imposed on the broker. The same is submitted to errors, omissions, change of price, rental or other conditions, prior to transaction.

INTERIOR

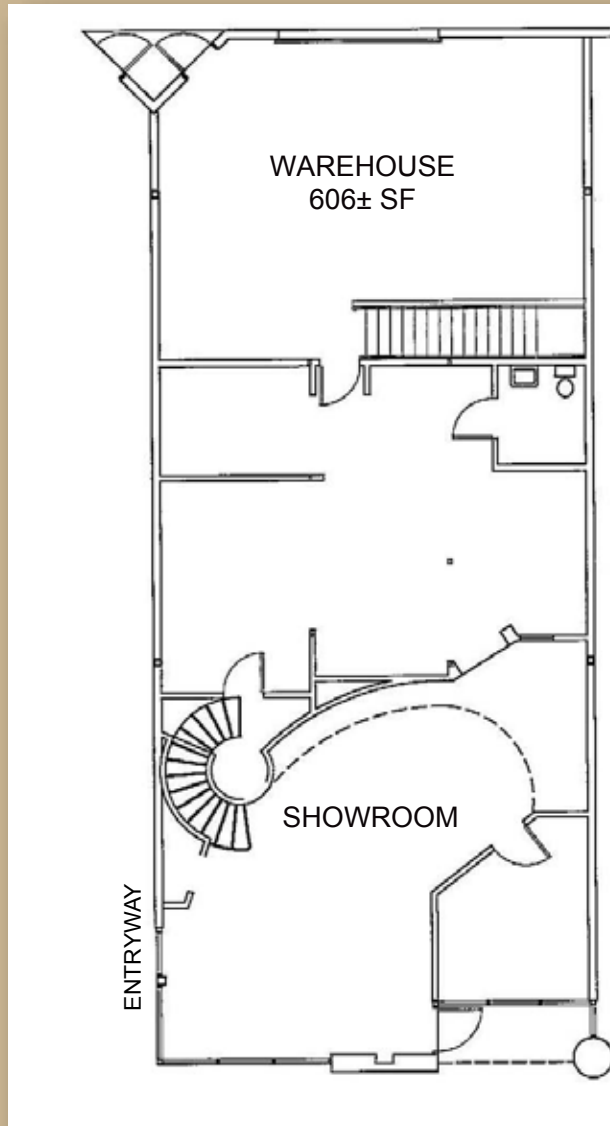
16441 N 91st Street, Suite 102



FLOOR PLAN

16441 N 91st Street, Suite 102

FIRST FLOOR



MEZZANINE 864± SF

