

Office/Warehouse for LEASE

2,664± sf

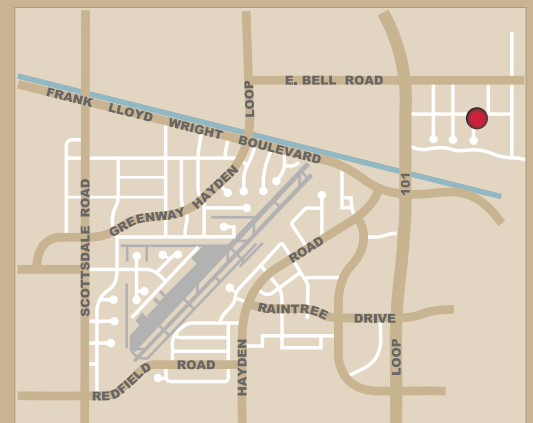
16597 N. 92nd Street - Suite A108



McDowell Mtn. Business Park located just blocks from the 101 and Bell Sharp professional design with Architectural finish.

SPACE AVAILABLE

- Large showroom, office, restroom and warehouse
- Zoned light industrial
- Easy access to 101 Freeway
- Ready to move in today!



All information regarding property is from sources is deemed reliable, but no warranty is made to its accuracy, and no liability is to be imposed on the broker. The same is submitted to errors, omissions, change of price, rental or other conditions, prior to transaction.



16410 north 91st street
suite 112
scottsdale, arizona 85260

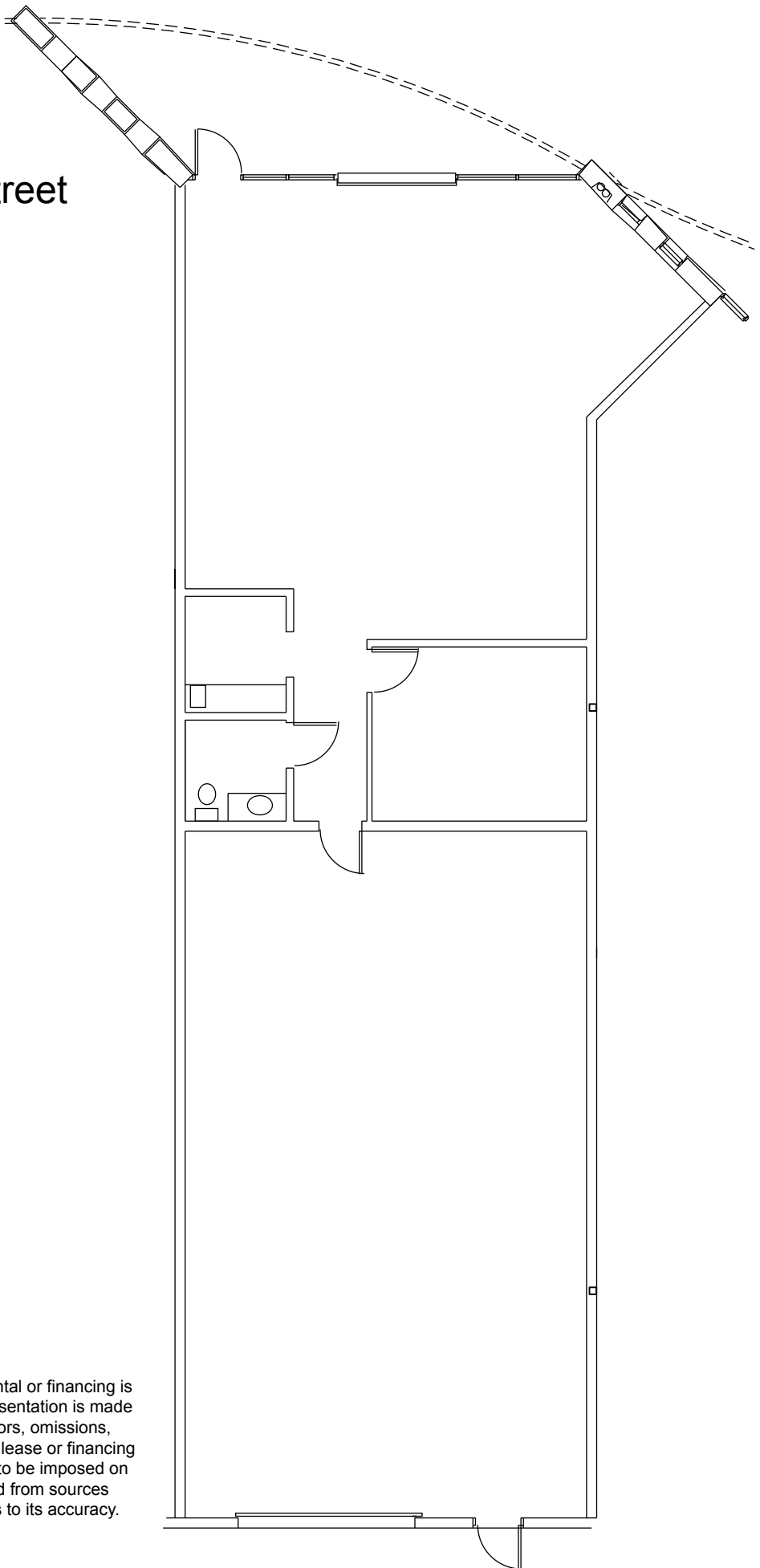
480.443.3992
shellcommercial.com

Randy Shell, Designated Broker
Randy@shellcommercial.com

John Quatrini, Associate Broker
JQ@shellcommercial.com

Michelle Gardner, Sales Associate
michelle@shellcommercial.com

16597 North 92nd Street
SUITE A108
2,664 sf



NOT TO SCALE

All information furnished regarding property for sale, rental or financing is from sources deemed reliable, but no warranty or representation is made to the accuracy thereof and same is submitted to errors, omissions, change of price, rental or other conditions, prior to sale, lease or financing or withdrawal without notice. No liability of any kind is to be imposed on the broker herein. This information has been secured from sources deemed reliable, however, we make no warranties as to its accuracy.