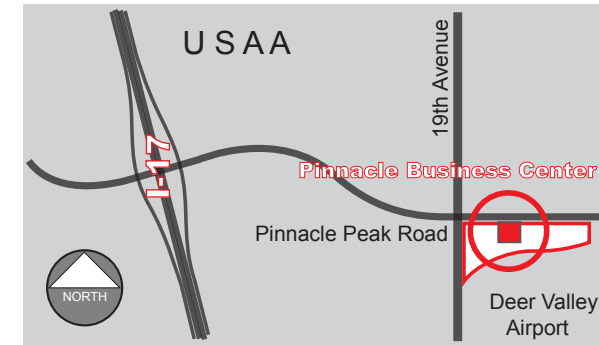
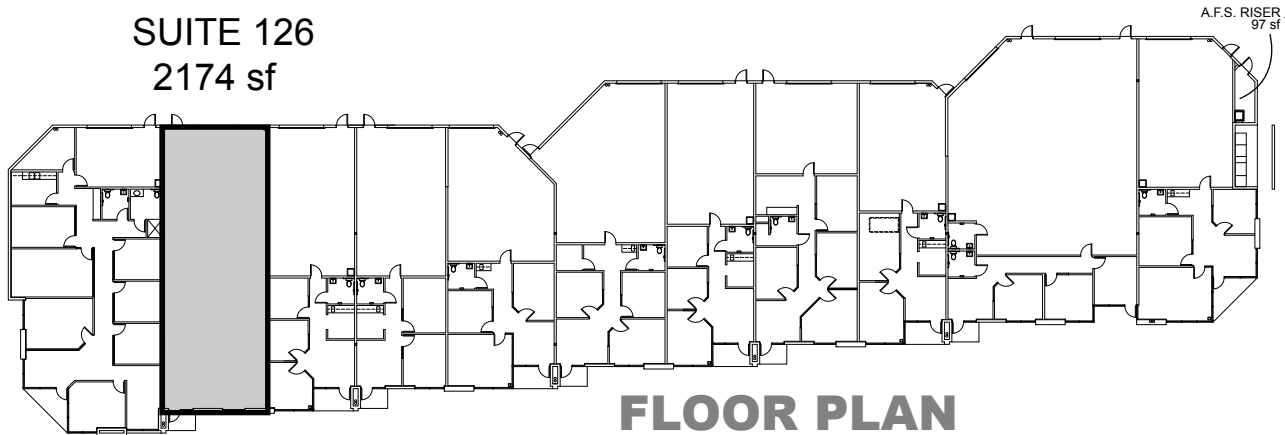


LAST CONDO AVAILABLE PRICED TO SELL!

SUITE 126
2174 sf



FEATURES

- 'Build to suit' interiors
- Easy access to I-17 and Loop 101 Freeways
- Zoned - Commerce Park District
- Parking Ratio 1:413 sf
- Clear height - 17'
- Quality masonry construction with appealing architectural details

All information furnished regarding property for sale, rental or financing is from sources deemed reliable, but no warranty or to errors, omissions, change of price, rental or other conditions, prior to sale, lease or financing or withdrawal without notice.



16410 north 91st street
suite 112
scottsdale, arizona 85260

480.443.3992
shellcommercial.com

Randy Shell, Designated Broker
Randy@shellcommercial.com

Michelle Gardner, Sales Associate
Michelle@shellcommercial.com

John Quatrini, Associate Broker
JQ@shellcommercial.com